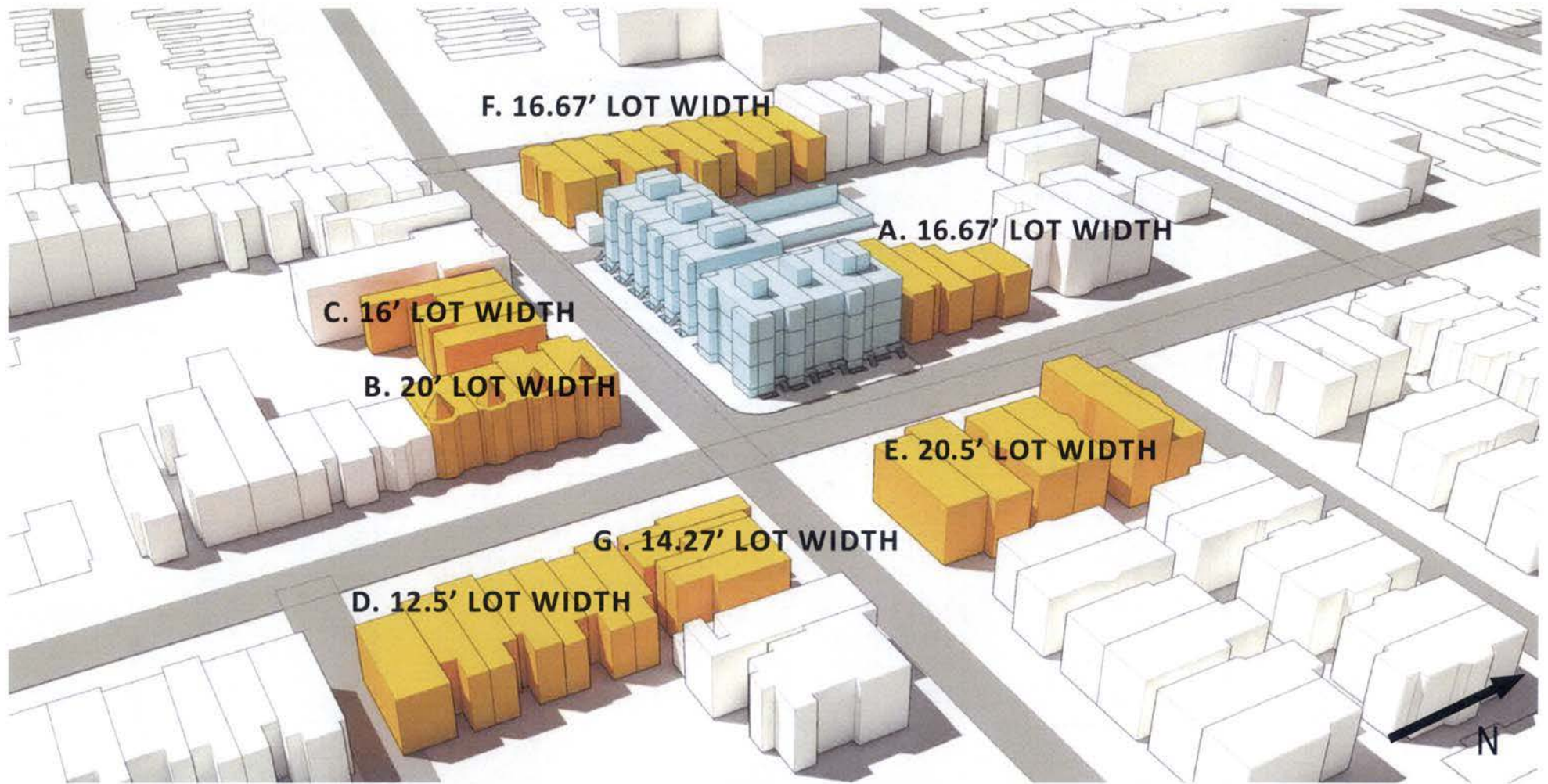


November 24, 2015

2800 SHERMAN AVE NW, WASHINGTON DC 20001

10

Board of Zoning Adjustment
 District of Columbia
 CASE NO.19127
 EXHIBIT NO.37

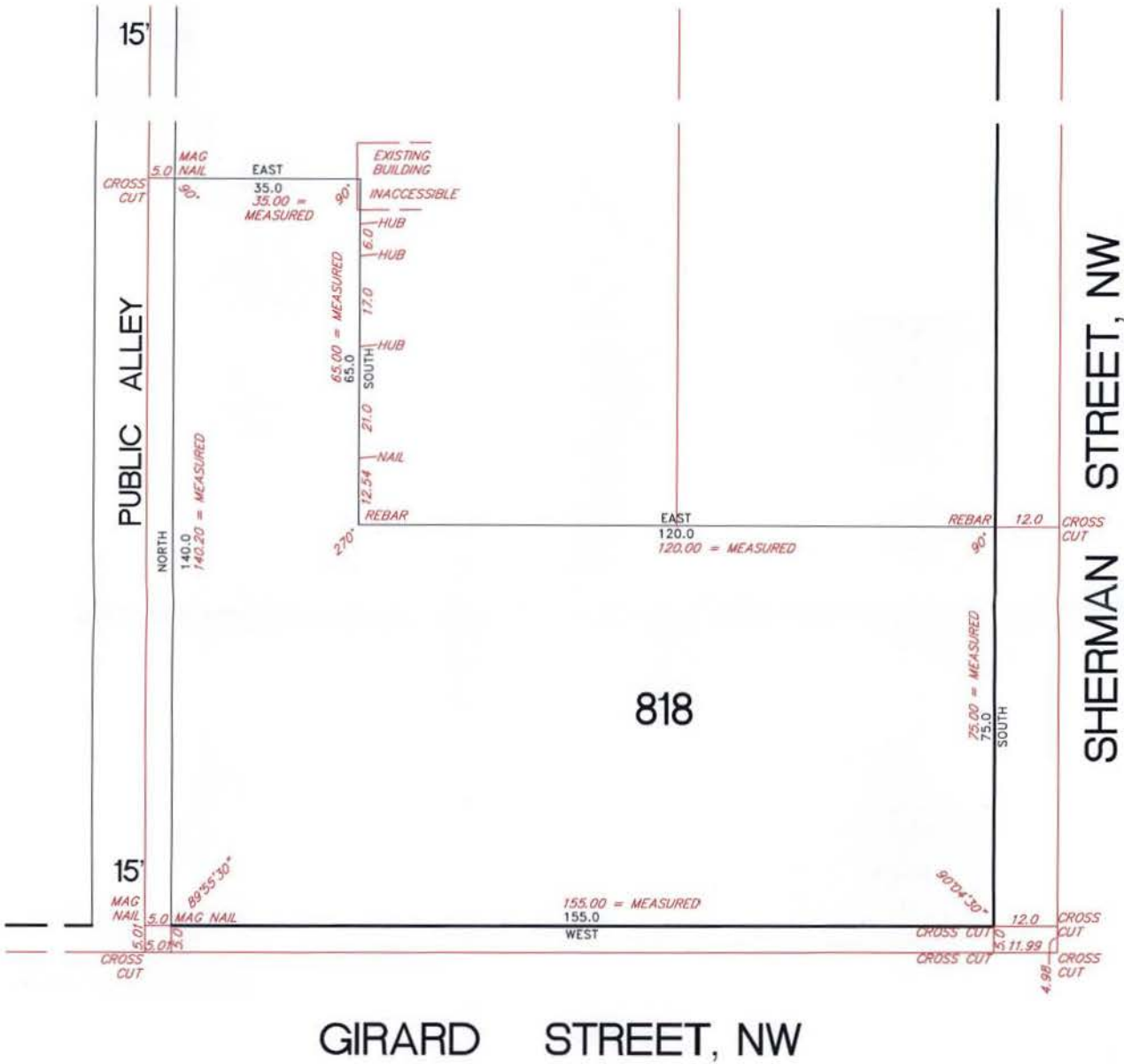


**AERIAL VIEW OF SITE:
CONTEXT STRUCTURES**

Plat of SURVEY OF LOT 818 TO MARK; SHOW ACTUAL ANGLES AND MEASURED DISTANCES.

SQUARE 2857

Scale: 1 inch = 20 feet



MADDOX
Engineers & Surveyors, Inc.

3204 Tower Oaks Boulevard, Suite 200-A, Rockville, MD 20852
(301) 762-9001 www.maddoxinc.com

Party Chief: J.J. SLAMA

Date: 09/29/2015

RLS Job No. 14127.03